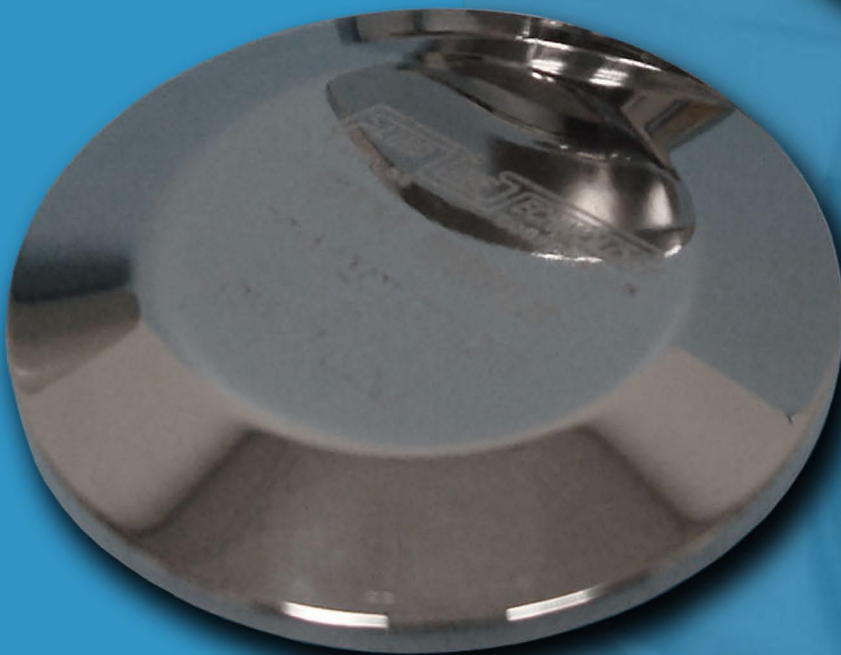


# STABILITY TEST VIALS

## BENEFITS

- Sanitary design
- TC End Cap included
- Gasket included
- One or three piece design available
- Fully customizable to customer specifications



## TECHNICAL INFORMATION

- Controlled sulfur stainless steel
- Available in Alloy 22
- Variety of surface finishes available
- MTR'S standard
- Variety of sizes available:
  - 25ml
  - 35ml
  - 45ml
  - 55ml

[www.fluidlinetech.com](http://www.fluidlinetech.com)

