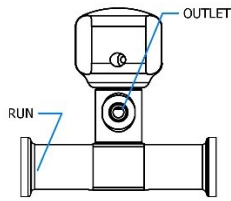
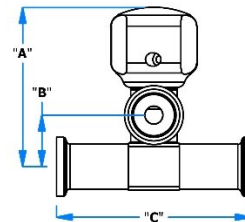
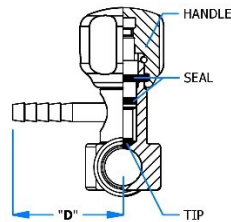


SANITARY ZERO STATIC TEE ANGLE BLEED VALVES – SUBMERSIBLE HANDLE



INLET – TC RUN;
OUTLET – HOSE BARB;



INLET – TC RUN;
OUTLET – TC;

SANITARY ZERO STATIC TEE ANGLE BLEED VALVES – SUBMERSIBLE HANDLE (Ø 0.187" INLET BORE SIZE)						
	TC RUN	PART #	"A" DIM	"B" DIM	"C" DIM	"D" DIM
1/4" HB OUTLET	0.5"	9RGBR2A*	2.51	0.79	3.10	1.85
	0.75"	9RGFR2A	2.62	0.91	3.25	1.85
	1.0"	9RGLR2A	2.75	1.04	3.35	1.85
	1.5"	9RGSR2A	3.00	1.29	3.35	1.85
	2.0"	9RGZR2A	3.26	1.55	3.25	1.85
	2.5"	9RHJR2A	3.50	1.79	3.25	1.85
	3.0"	9RJDR2A	3.76	2.05	3.25	1.85
	4.0"	9RJTR2A	4.24	2.53	3.25	1.85

	TC RUN	PART #	"A" DIM	"B" DIM	"C" DIM	"D" DIM
3/8" TC OUTLET	0.5"	9RGCT2A	2.51	0.79	3.10	2.75"
	0.75"	9RGGT2A	2.62	0.91	3.25	2.75"
	1.0"	9RGMT2A	2.75	1.04	3.35	2.75"
	1.5"	9GTT2A	3.00	1.29	3.35	2.75"
	2.0"	9RHAT2A	3.26	1.55	3.25	2.75"
	2.5"	9RHKT2A	3.50	1.79	3.25	2.75"
	3.0"	9RIET2A	3.76	2.05	3.25	2.75"
	4.0"	9RIUT2A	4.24	2.53	3.25	2.75"

SANITARY ZERO STATIC TEE ANGLE BLEED VALVES – SUBMERSIBLE HANDLE CONFIGURATION

EXAMPLE: PART# 9RGBR2A* – 1/4" HB OUTLET X 0.5" TRI-CLAMP RUN INLET ZERO STATIC TEE ANGLE BLEED VALVE

9 R G B R 2 A _ _ _ _ _

HANDLE 6 = SOLID 8 = SNAP 9 = SUBMERSIBLE T = TOGGLE S = TOGGLE SAFETY	FINISH LB = 20 RA EP DB = 20 RA MB = 15 RA EP EB = 15 RA	SEAL M = EPDM N = VITON® P = RED SIL Q = CLR. SIL. K = KALTRAZ®	ORIENTATION 0 = N/A C = TO CLAMP H = TO HANDLE	TIP H = PTFE-TFM T = ELASTOMER	HANDLE COLOR R = RED ● Z = ORANGE ● Y = YELLOW ● G = GREEN ● B = BLUE ● W = WHITE ○ 0 = BLACK ●
----------------------------------------------------------------------------------------------	-----------------------------------------------------------------------------	---------------------------------------------------------------------------------------	----------------------------------------------------------------	---------------------------------------------	-----------------------------------------------------------------------------------------------------------------------------

NOTE: Custom end connections available on request. Please contact a sales representative.

VITON® is a registered trademark of DuPont Performance Elastomers.
KALTRAZ® is a registered trademark of Advant O Seal.

SANITARY ZERO STATIC TEE ANGLE BLEED VALVES – SUBMERSIBLE HANDLE – SPARES

BLEED VALVE SPARE SEALS FOR STEM CAN BE ORDERED IN TWO PACKAGING TYPES DEPENDING ON INVENTORY REQUIREMENTS TO SUIT CUSTOMER NEEDS.

SEALS FOR STEM				
SEAL MATERIAL			PART #	
			SET	KIT
TEFLON® TIP	TEFLON® TIP — EPDM O-RING		9R0003M — SET	9R0003M — KIT
	TEFLON® TIP — VITON® O-RING		9R0003N — SET	9R0003N — KIT
	TEFLON® TIP — RED SIL. O-RING		9R0003P — SET	9R0003P — KIT
	TEFLON® TIP — CLR. SIL. O-RING		9R0003Q — SET	9R0003Q — KIT
	TEFLON® TIP — KALTRAZ® O-RING		9R0003K — SET	9R0003K — KIT
ELASTOMER TIP	EPDM TIP — EPDM O-RING		9R0002M — SET	9R0002M — KIT
	VITON® TIP — VITON® O-RING		9R0002N — SET	9R0002N — KIT
	RED SIL. TIP — RED SIL. O-RING		9R0002P — SET	9R0002P — KIT
	CLR SIL. TIP — CLR. SIL. O-RING		9R0002Q — SET	9R0002Q — KIT
	KALTRAZ® TIP — KALTRAZ® O-RING		9R0002K — SET	9R0002K — KIT

NOTES:

- 1 SET CONTAINS = (1) TIP, (1) STEM O-RING, (1) DOWEL PIN
- 1 KIT CONTAINS = (5) TIPS, (5) STEM O-RINGS, (5) DOWEL PINS

STEM		
TIP	FINISH	
	20 RA	15 RA/EP
TEFLON® TIP	6B000BADB	6B000BAMB
ELASTOMER TIP	6B000TADB	6B000TAMB

NOTES:

- ELASTOMER IS USED AS A REFERENCE FOR MATERIALS LIKE EPDM, VITON®, RED SILICONE, CLEAR SILICONE AND KALTRAZ®

BLEED VALVE SPARE SEALS FOR HANDLE CAN BE ORDERED IN TWO PACKAGING TYPES DEPENDING ON INVENTORY REQUIREMENTS TO SUIT CUSTOMER NEEDS.

SEALS FOR HANDLE		
HANDLE O-RING	PART #	
	SET	KIT
EPDM	9R000QM — SET	9R000QM — KIT
VITON®	9R000QN — SET	9R000QN — KIT
RED SIL.	9R000QP — SET	9R000QP — KIT
CLR SIL.	9R000QQ — SET	9R000QQ — KIT
KALTRAZ®	9R000QK — SET	9R000QK — KIT

NOTES:

- 1 SET CONTAINS = (3) LOCK SCREWS, (1) HANDLE O-RING, (1) ALLEN WRENCH
- 1 KIT CONTAINS = (15) LOCK SCREWS, (5) HANDLE O-RINGS, (1) ALLEN WRENCH

HANDLE	
HANDLE COLOR	PART #
RED	9B000DS — R
ORANGE	9B000DS — Z
YELLOW	9B000DS — Y
GREEN	9B000DS — G
BLUE	9B000DS — B
WHITE	9B000DS — W
BLACK	9B000DG — 0

Teflon® is a registered trademark of DuPont Fluorocarbon Resins. VITON® is a registered trademark of DuPont Performance Elastomers. KALTRAZ® is a registered trademark of Advant O Seal.

LOCK SCREWS	
SCREW O-RING TYPE	PART #
EPDM	9B000HA – M
VITON®	9B000HA – N
RED SIL.	9B000HA – P
CLR SIL.	9B000HA – Q
KALTRAZ®	9B000HA – K

NOTES:

- 1 UNIT = (3) LOCK SCREWS + (1) ALLEN WRENCH

O-RING LUBE	
PART#	
	6Z0009

NOTES:

- PLEASE REFER TO FLT O-RING LUBE DATA SHEET FOR SPECIFICATION